

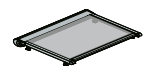
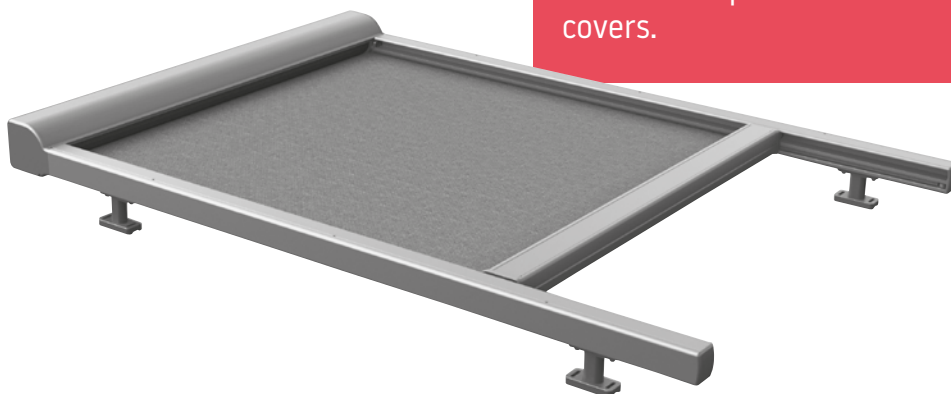


Your supplier of sun protection systems



Salerno

Salerno can be installed on roof windows and mounted in three ways: standard, inverted and lateral. This product has drainage elements in both the front slat and the box/side covers. The gutter-type profile allows water to drain along the guide rail. To ensure flawless fabric, we use a 70 mm corrugated steel tube which provides better rigidity. The fabric and tube is mounted on a spring-loaded holder, similar to the RS Smart, making it easy to mount and dismantle the product. Salerno is a perfect choice for roof windows and terrace covers.

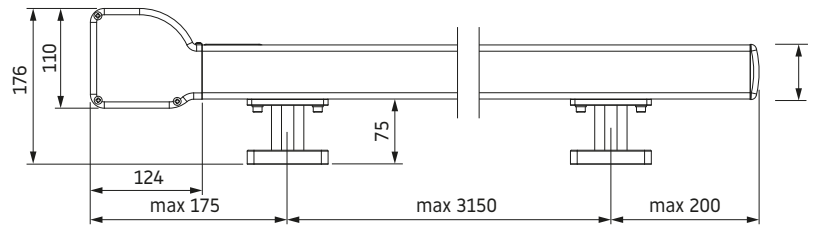


Salerno

Type:
SALERNO

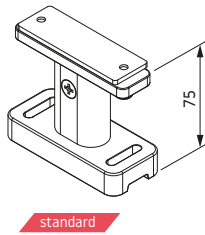
Max dimensions:
400 x 300 cm
300 x 400 cm

Drive:
electric

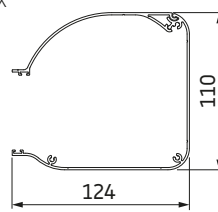


Mounting elements for guide rails

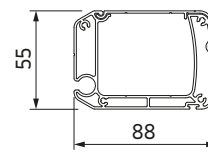
support



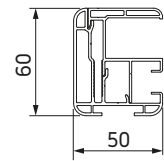
box



end slat

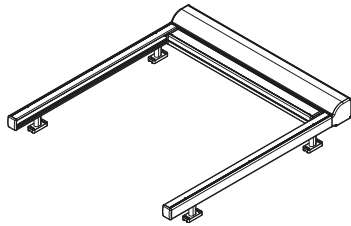


guide rail

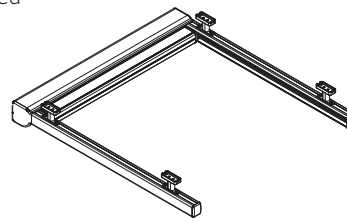


Installation variants

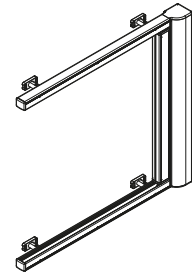
standard



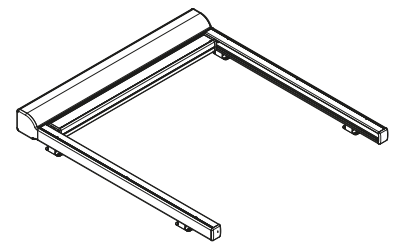
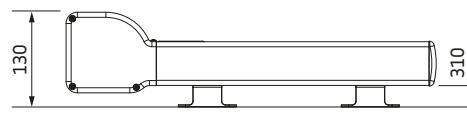
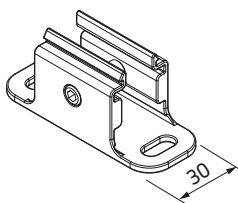
inverted



lateral



Mounting clip



Gutter

